

Special Issue!

# Mercy Update December 2008

Gift Catalog



This Christmas,  
**Give**  
the Gift of  
**Mercy.**

**Improve lives** *Help people get healthy, get jobs and live on their own.*

**Give nourishment and housing.** *Provide the basics while clients make the transition from homelessness to home.*

**Help end homelessness.** See how inside.

Sponsored by the Sisters of Mercy Northeast Community

Mercy Housing and Shelter Corporation



***Our youngest donor, eight-year-old Mira Bella Peters, hugs her puppy, Nina.***

At first, Mira Peters wanted a puppy when she turned 8 in September. But after some thought, she and her mom, Pam, decided to celebrate her birthday by asking for donations - in Mira's name - to Mercy Housing and Shelter. Mira collected a van full of clothing, household goods and cash donations to help people less fortunate. A month later, to reward Mira's generosity, her parents surprised her with Nina, a Miniature Schnauzer. So, why not take a cue from our youngest donor and give **Gifts of Mercy** this holiday season? Mira will tell you that the rewards are grrreat!

**Looking for that perfect gift for the person who has everything?**

Why not give a gift to help someone who has nothing? Donate to Mercy in the name of friends, relatives or loved ones who have so much. See inside for ideas!

## Mercy Housing and Shelter Corp. Programs



### St. Elizabeth House, Hartford

**Friendship Center** 300 people helped daily with free meals, family assistance, clothing, showers, toiletries, medical care and phone use.

**Transitional Housing** 48 single rooms for adults for up to 2 years. Meals, clothing, medical care, case management, job assistance, job placement, permanent housing assistance.

**Respite program** 10 single short-term rooms for mental health clients discharged from hospitals who have no home. Meals, clothing, intensive case management, placement in long-term housing.



### Shepherd Home, Middletown

Transitional Housing: 70 single rooms for adults for up to 2 years. Meals, clothing, medical care, case management, job assistance, job placement, permanent housing assistance.

### The Residence, West Hartford

12 permanent apartments and intensive case management for homeless men and women with psychiatric disabilities.

### Mercy House

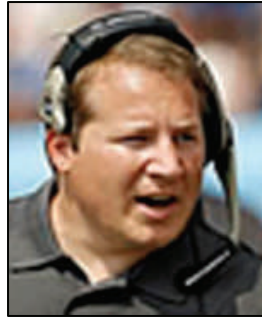
9 single rooms, intensive counseling and case management for adults with several disabilities. Staff help provide residents health services, education and recreation.

### Catherine's Place

Short-term housing for 8 single homeless women with a history of substance abuse. Case management, help with employment, permanent housing and other services, in partnership with The Franciscan Center for Urban Ministry, St. Patrick/St. Anthony parish and St. Joseph College.

### Supportive Housing

129 permanent apartments in the region for homeless adults and families. Help with rent, deposit, furniture, household goods, personal stability, education and substance abuse and mental health treatment.

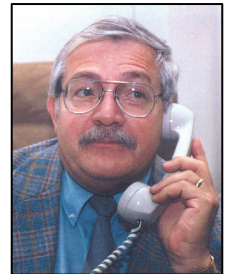


Eric Mangini

Mercy...is a place where you can get a fresh start.

Honor someone special with a **Gift of Mercy**

**In memory of his father, Carmine**, who volunteered at St. Elizabeth House, NY Jets Head Coach Eric Mangini, paid for a picnic for 200 transitional living clients, bought Mercy an industrial-sized gas grill and enlisted family members in donating cash, toiletries and clothing. He also donated Jets tickets and two signed footballs for auction at Mercy's 2008 Dreams Can Come True gala. And he sponsored a trip for 15 clients to a Jets game this fall. (See related story page 3.) Mangini also made a video listing all the reasons to support Mercy Housing and Shelter!



Carmine Mangini

Visit [www.mercyhousingct.org](http://www.mercyhousingct.org) to view the Mangini video.

**Meals are a Gift of Mercy.**

**Honor someone special with a gift of meals for a week or a year donated in their name.**

Give the gift of nourishment this holiday season. Everyone feels better — physically and spiritually — after a warm meal. Nourishment gives us the strength to do what we need to do, sometimes against great odds. So, **give the gift of a meal in someone's honor and we will send your honoree a card notifying them of your thoughtful gesture. Place your order using the form in this catalog.**



*A client waits at the Friendship Center.*

**Honor a someone by donating in their name the cost of food for a week for a person eating at the Friendship Center.**

**\$35**

**Meals are a Gift of Mercy**

Mercy serves **225 meals a day**, twice a day, six days a week in the Friendship Center and a total **2,688 meals a week** in the dining rooms of our two transitional housing programs.



*Volunteers make breakfast to serve in a dining hall.*

**Honor someone by donating in their name the cost of food for one person for a year in one of Mercy's dining rooms.**

**\$400**

**Mercy Housing and Shelter Corporation  
Board of Trustees**

Karen Brand, Chair  
Kenneth Rizzio, Vice chair  
Richard Alleyne  
Laura Bellotti  
John Bigos  
Charles T. Brooks  
Sister Claire Filippone  
Richard Gentile  
William Kennedy  
Catherine Mohan  
Russell Nichols  
Mary Onidi  
Robert Peters  
Kathleen Quigley  
Sister Maureen Reardon  
Sister Mary Alice Synkewecz  
Bradley Venne  
Unoma Joyce Weekes

Sister Patricia McKeon  
Executive Director

**Locations**

Administrative Offices  
211 Wethersfield Ave.  
Hartford, CT 06114  
(860) 808-2054

Catherine's Place  
Hartford, CT  
(860) 247-7464

St. Elizabeth House  
118 Main St.  
Hartford, CT 06106  
(860) 808-2120

Mercy House  
Hartford, CT  
(860) 570-8306

Supportive Housing Services  
211 Wethersfield Ave.  
Hartford, CT 06114  
(860) 808-2050

Shepherd Home  
112 Bow Lane  
Middletown, CT 06457  
(860) 344-0766

The Residence  
2021 Albany Ave.  
West Hartford, CT 06117  
(860) 570-8200 ext. 8306

**“An ... early Christmas gift.”**



*Gary Cain, 42, resident of Shepherd Home, said he's grateful to Mercy and Eric Mangini for an "early Christmas gift" to see the Jets.*

Gary Cain has been a Jets fan since 1977. But the first time he saw his favorite team live was two months ago when Jets Coach Eric Mangini sponsored a trip to a game for 15 Mercy clients. Cain, one of 118 adults living in Mercy transitional housing, was a college football player. The divorced father of three grew up in Fairfield County, but became ensnared in addiction and lost it all. After two years on Hartford streets, he's getting his life back. Thanks to donations, Mercy is able to provide Cain a warm meal, roof over his head, recovery counseling and guidance toward independence. We also are able to obtain free dental work and knee surgery for him. Cain, 42, is looking for work. In the meantime, he coaches Special Olympics, volunteers at a soup kitchen and provides security for his church.

**Housing is a Gift of Mercy.  
Honor someone special with a gift of  
a home for a week, month or year donated in their name.**

Give the precious gift of a home this holiday season. You can donate the cost of a temporary home while people get back on their feet or a deposit on an apartment so they may live independently while adjusting to the workforce and their community. So, **give the gift of housing in someone's honor and we will send your honoree a card notifying them of your thoughtful gesture. Place your order using the form in this catalog.**



*Shepherd Home, Middletown*

House a homeless adult for a year in a Mercy transitional home.

**\$12,000**

...for a month

**\$1,000**

...for a week

**\$230**

**Thanks to Mercy...**

**Lizette no longer lives in her car**

Five years ago, Lizette (not her real name) moved to Hartford after leaving her husband who gave her AIDS. She bought a broken down car for \$90 and called it home. Today, with the help of Mercy's Supportive Housing program, Lizette has her own apartment. Mercy also helped her land a job. And she gets to work in a car that runs! A gift of a security deposit will help more people like Lizette.

**\$800**

Donate a security deposit for a new apartment.

**about MHSC...**

Mercy Housing and Shelter Corp. provides housing assistance and supportive services to adults and families who are homeless or at risk of becoming homeless. Mercy works to empower its clients to become independent so they may live and work with dignity and respect. Mercy seeks to end homelessness by advocating for changes in the social systems that perpetrate homelessness.



NON-PROFIT  
US POSTAGE  
PAID  
HARTFORD CT  
PERMIT NO 672

[www.mercyhousingct.org](http://www.mercyhousingct.org)

Mercy Housing and Shelter Corp.  
211 Wethersfield Ave.  
Hartford, CT 06114  
Phone (860) 808-2054

**Mercy's Mission**

Mercy Housing and Shelter Corp., a non-profit organization sponsored by the Sisters of Mercy, responds to the needs of those who are homeless or at risk of becoming homeless by providing them with food, housing, shelter, education and support services in an atmosphere that respects each person. Mercy advocates on behalf of individuals while challenging injustice and social systems.



**Special Issue! Gifts of Mercy catalog**

Give **Gifts of Mercy** this season in someone's honor by donating the cost of **housing** or **meals** to Mercy Housing and Shelter. **Everyone wins: the honoree gets a meaningful gift, the gift-giver finds the perfect present and gets a tax-deduction, and Mercy continues its work to end homelessness.**

**\$32** House a homeless adult for a night in transitional housing.

**\$52** House a homeless woman for a night at Catherine's Place.

**\$78** Feed a residential client 3 meals a day for a week.

**fast facts about MHSC...**

We serve more than:

**8,000 clients** a year

**400 men, women and children** a day

**200,000 meals** a year

We provide:

More than **50,000 bed nights** a year

Support to clients in more than **100 apartments**

*See page 2 for more program info.*



*A Gift of Mercy  
(name of donor)*

*Has made a donation in your name  
to Mercy Housing and Shelter Corp.  
Donations help us continue providing food,  
clothing, housing, medical care and case  
management to guide people out of homelessness.*

**FREE card for**

**every gift in someone's honor.**

For each gift you donate in someone's name, we'll send them this beautiful card with a sketch of historic St. Elizabeth House, a national landmark. The card names the gift-giver, who will receive a receipt to use for a tax deduction. (See inside for details.)

Every gift in this catalog goes to make a life-changing difference for adults and families served by Mercy Housing and Shelter. Those differences make big strides toward ending homelessness.